

Sabayon

Create and apply profiles

Documentation version 2.0 created 10th May 2005

Updated 1st June 2005

Licence : GNU FDL

Copyright © : CRI74

Author :

Philippe TONGUET

philippe.tonguet@ext.cri74.org



Bâtiment le Salève I
Site d'Archamps
F-74160 ARCHAMPS

Tél. : +33 (0)4 50 31 56 30
Fax : +33 (0)4 50 95 38 17

E-mail : info@cri74.fr
Web : www.cri74.fr

SIRET : 400 210 646 000 14
APE : 913 E

Index

1 – Description	3
2 – Installation	4
2.1 – With the tarball	4
2.2 – With the package (for ubuntu)	4
2.3 – From CVS	4
3 – Create a profile	6
4 – Apply a profile	9
4.1 – For one or many users	9
4.2 – For a group of users	10
4.2.1 – Manually	10
4.2.2 – Automatically	11
5 – Webliographie	13

1 – Description

Sabayon is a system administration tool to manage GNOME desktop settings. Sabayon provides a sane way to edit GConf defaults and GConf mandatory keys: the same way you edit your desktop. Sabayon launches profiles in an Xnest window. Any changes you make in the Xnest window are saved back to the profile file, which can then be applied to user's accounts.

Currently Sabayon is limited to the creation and update of user preference profiles. It does not deal with the very large problem of actually populating target system with those preferences.

So far Sabayon supports complete files and the configuration format for:

- GConf
- Mozilla/Firefox

We are looking into or planning on adding support for the following:

- OpenOffice.org

2 – Installation

2.1 – With the tarball

Download Sabayon at <http://ftp.gnome.org/pub/GNOME/sources/sabayon/>

Open a terminal and type :

```
$ tar -zxvf ~/sabayon-0.18.tar.gz
$ cd sabayon-0.18
$ ./configure --prefix=/usr --sysconfdir=/etc --mandir=/usr/share/man
$ make
$ sudo make install
```

Add a user (you must have root permissions) :

```
# /usr/sbin/useradd -c "Sabayon user" -d /var/sabayon -g nogroup -s /sbin/nologin sabayon
```

Create the directory /var/sabayon :

```
# mkdir /var/sabayon
```

Apply the following permissions :

```
# chown -R sabayon /var/sabayon
# chgrp -R nogroup /var/sabayon
```

2.2 – With the package (for ubuntu)

For ubuntu distribution, there is a package available on the website : <http://packages.ubuntu.com/breezy/gnome/sabayon>

Open a terminal and type :

```
# dpkg -i sabayon_0.18-0ubuntu1_all.deb
```

Depends are :

- xnest
- python (>= 2.4) and python (<< 2.5)
- python2.4-gamin
- python2.4-gtk2 (>= 2.5.3)
- python2.4-gnome2 (>= 2.6.0)
- python2.4-glade2
- python2.4-libxml2
- gconf2 (>= 2.10.0-0ubuntu2)

2.3 – From CVS

To have the last version of Sabayon, install it from CVS.

```
$ export CVSROOT=':pserver:anonymous@anoncvs.gnome.org:/cvs/gnome'
$ cvs login
[press enter for blank password]
$ cvs -z3 co sabayon
$ cd sabayon
$ ./autogen.sh --prefix=/usr
$ ./configure --prefix=/usr --sysconfdir=/etc --mandir=/usr/share/man
$ make
$ sudo make install
```

Add a user (you must have root permissions) :

```
# /usr/sbin/useradd -c "Sabayon user" -d /var/sabayon -g nogroup -s /sbin/nologin sabayon
```

Create the directory /var/sabayon :

```
# mkdir /var/sabayon
```

Apply the following permissions :

```
# chown -R sabayon /var/sabayon  
# chgrp -R nogroup /var/sabayon
```

3 – Create a profile

Launch Sabayon :

```
$ sudo sabayon
```

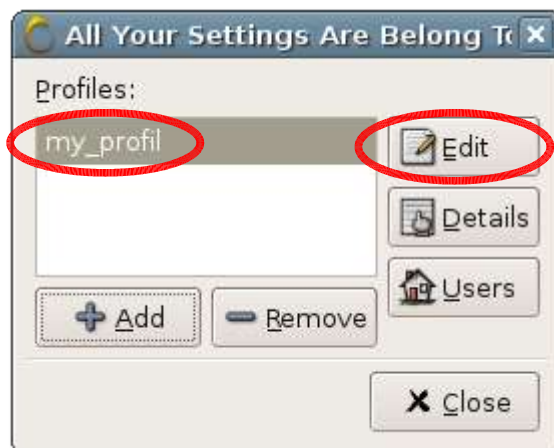
Create a new profile : -> *Add*



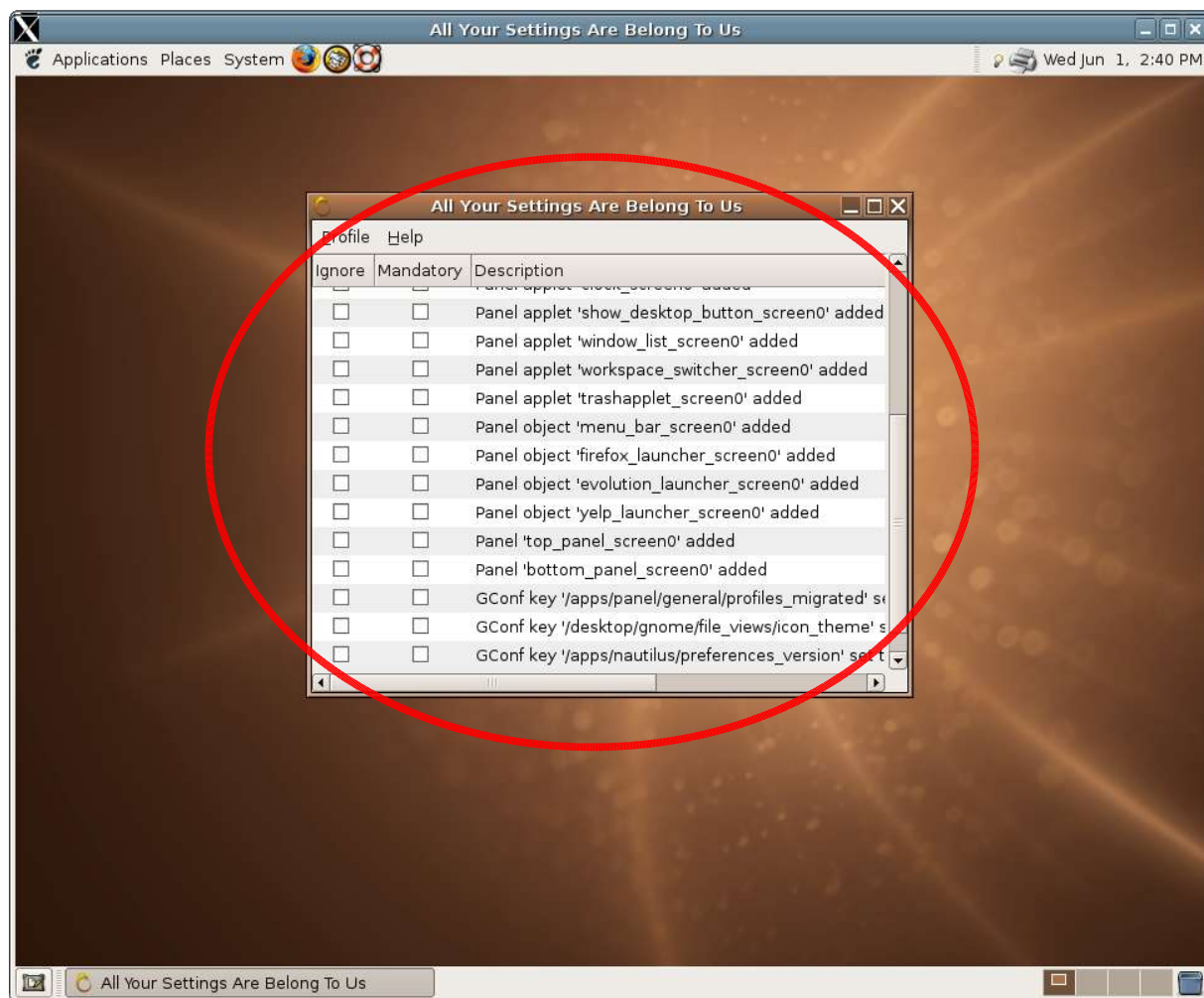
Set the profile's name and click on *Add button*



Select the profil and click on *Edit button*



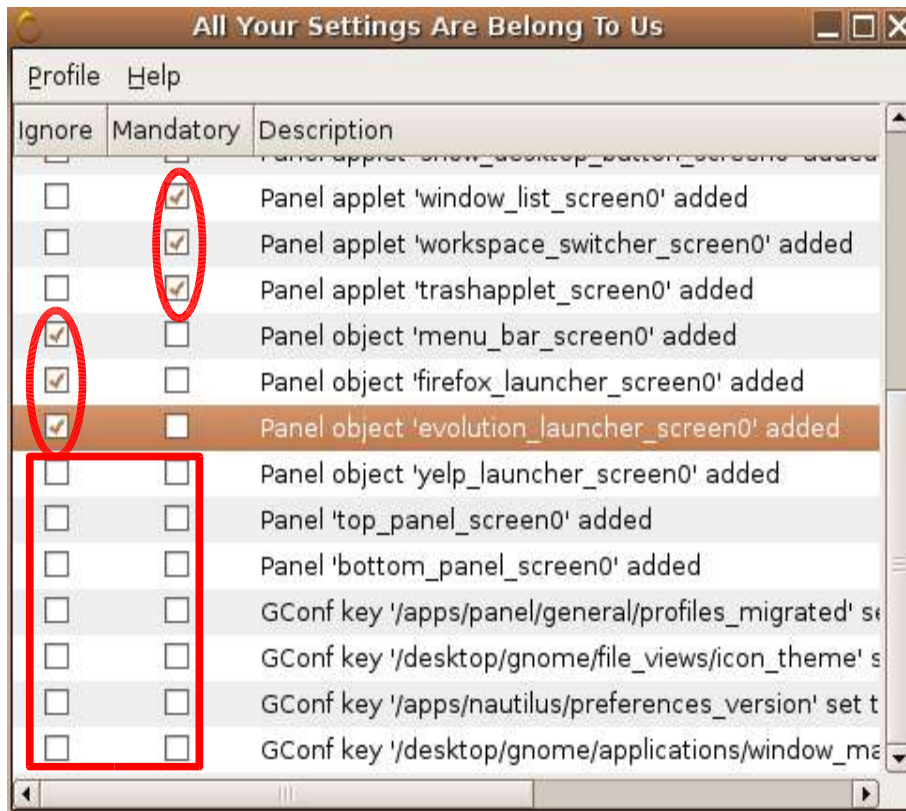
A new session is opened with the Sabayon user in a Xnest window :



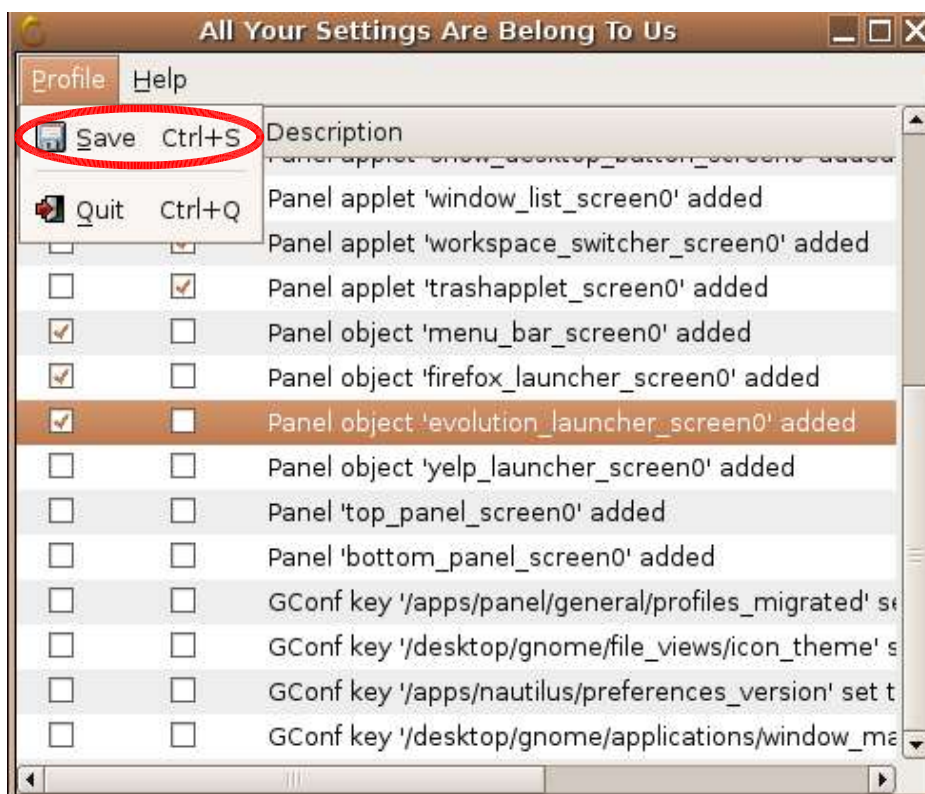
Change the settings of the session as you want.

When you modify the session, the settings that you have changed appear in the monitor. For each setting (line), you can choose if you want to ignore it, to put it mandatory or to put it by default.

- To ignore it, notch « Ignore ».
- To put it mandatory, notch « Mandatory ».
- To put it by default, don't notch anything.



Then save the profile : -> *Profile* -> *Save*



The profile is saved in /etc/desktop-profiles/my_profil.zip.

4 – Apply a profile

Important : I advise you creating a new user to test the profile.

Add the following lines in /etc/gconf/2/path (add them at the beginning of the file) :

```
xml:readonly:${HOME}/.gconf.xml.mandatory
xml:readwrite:${HOME}/.gconf
xml:readonly:${HOME}/.gconf.xml.defaults
```

4.1 – For one or many users

Create and edit « /etc/X11/Xsession.d/60sabayon_apply ».

Fichier 1 : 60sabayon_apply

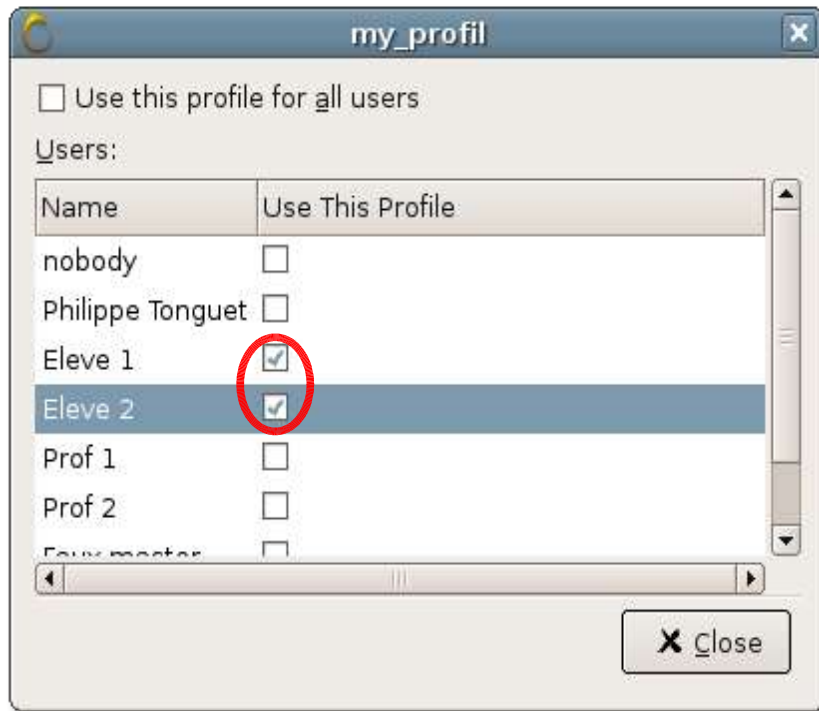
```
#
# Apply the Sabayon profile for the current user (if any)
#

if [ "x$DISABLE_SABAYON_XINITRC" = "x" ] ; then
  if [ -x /usr/sbin/sabayon-apply ] ; then
    /usr/sbin/sabayon-apply
  fi
fi
```

Select the profile that you want to apply and click on « Users » :



Then, select the users that you want to apply the profile.



In this example Eleve1 and Eleve 2 will have the profile « my_profil ».

4.2 – For a group of users

4.2.1 – Manually

The following is a script to apply a profile to a group of users :

```
#!/bin/bash

#
#Script : apply a profile to a group of users
#Argument 1 : name of the profile
#Argument 2 : name of the group
#
chemin_profil="/etc/desktop-profiles/$1".zip

if [ $# -eq 2 ]
then
  if [ -a $chemin_profil ]
  then
    getent group | cut -d ":" -f 1 | grep $2 > /dev/null
    result=$?
    if [ $result -eq 0 ]
    then
      if [ -x /usr/sbin/sabayon-apply ]
      then
        groupe=`getent group | cut -d ":" -f 1,3 | grep $2 | cut -d ":" -f 2`
        getent passwd | while read ligne
        do
          gid=$(echo $ligne | cut -d ":" -f 4)
          name=$(echo $ligne | cut -d ":" -f 1)
          if [ $gid -eq $groupe ]
```

```

then
  home=$(getent passwd | cut -d ":" -f 1,6 | grep $name | cut -d ":" -f 2)
  touch $home/.gconf.path
  touch $home/.gconf.path.defaults
  touch $home/.gconf.path.mandatory
  echo "include $home/.gconf.path.defaults" > $home/.gconf.path
  echo "include $home/.gconf.path.mandatory" >> $home/.gconf.path
  echo xml:readonly:$home/.gconf.xml.defaults > $home/.gconf.path.defaults
  echo xml:readonly:$home/.gconf.xml.mandatory > $home/.gconf.path.mandatory
  if [ -a $home/.gconf.xml.defaults ]
  then
    rm -r $home/.gconf.xml.defaults
  fi
  if [ -a $home/.gconf.xml.mandatory ]
  then
    rm -r $home/.gconf.xml.mandatory
  fi
  su $name -c "/usr/sbin/sabayon-apply $chemin_profil"
  chown -R root $home/.gconf.path
  chgrp -R root $home/.gconf.path
  chmod 755 $home/.gconf.path
  chown -R root $home/.gconf.path.defaults
  chgrp -R root $home/.gconf.path.defaults
  chmod 755 $home/.gconf.path.defaults
  chown -R root $home/.gconf.path.mandatory
  chgrp -R root $home/.gconf.path.mandatory
  chmod 755 $home/.gconf.path.mandatory
  chown -R root $home/.gconf.xml.defaults
  chgrp -R root $home/.gconf.xml.defaults
  chmod 755 $home/.gconf.xml.defaults
  chown -R root $home/.gconf.xml.mandatory
  chgrp -R root $home/.gconf.xml.mandatory
  chmod 755 $home/.gconf.xml.mandatory
  echo "The profile $1 has been applied to $name."
fi
done
echo "The profile $1 has been applied to the group $2."
fi
else
  echo "The group does not exist."
fi
else
  echo "The profile does not exist."
fi
else
  echo ""
  echo "Usage: $0 [name of the profile] [name of the group]"
  echo ""
fi

```

Usage :

```
# sudo ./sabayon.sh my_profil eleves
```

- The name of the script is sabayon.sh.
- 1st argument : « my_profil » which is the name of the profile.
- 2nd argument : « eleves » which is the name of the group.

4.2.2 – Automatically

In this example, we will apply two profiles to two groups of users.

Create and edit the file « /etc/X11/Xsession.d/60sabayon_apply » :

Fichier 2 : 60sabayon_apply

```
#
# Apply the Sabayon profile for the current user (if any)
#

if [ "x$DISABLE_SABAYON_XINITRC" = "x" ] ; then
  if [ -x /usr/sbin/sabayon-apply ] ; then
    /usr/sbin/sabayon-apply
    GID=`su $USER -c 'id -g'`
    if [ $GID -eq 1002 ] ; then
      su $USER -c "/usr/sbin/sabayon-apply /etc/desktop-profiles/eleve.zip"
    fi
    if [ $GID -eq 1003 ] ; then
      su $USER -c "/usr/sbin/sabayon-apply /etc/desktop-profiles/prof.zip"
    fi
  fi
fi
```

Notes :

- 1002 is the GID of the group « eleves ».
- 1003 is the GID of the group « profs ».
- You must have created the profiles « eleve.zip » and « prof.zip » before.

5 – Webliographie

<http://www.gnome.org/~seth/blog/sabayon>

<http://www.gnome.org/projects/sabayon/>